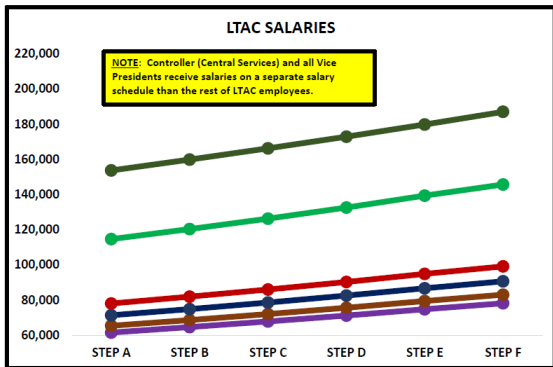


RANK	STEP A	STEP B	STEP C	STEP D	STEP E	STEP F
C1	161,415	167,564	173,957	180,606	187,523	194,715
C2	167,149	173,528	180,161	187,058	194,232	201,692
C3	179,768	186,650	193,807	201,250	208,993	217,044
C4	195,993	203,422	211,146	219,183	227,539	236,228
CSM	196,973	204,544	212,417	220,606	229,122	237,977
C5C	199,544	207,114	214,987	223,176	231,692	240,548

- C5C** President, Columbia College
- C5M** President, Modesto Junior College
- C4** Executive Vice Chancellor
- C3** Vice Chancellor
- C2** Assistant Vice Chancellor
- C1** Associate Vice Chancellor

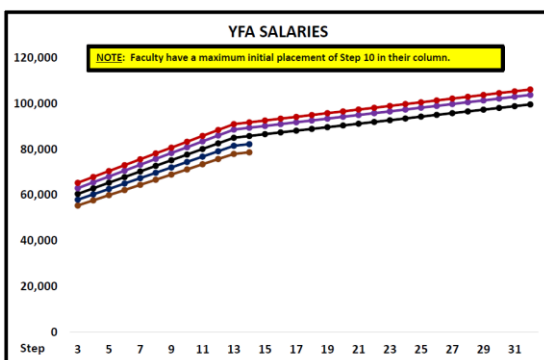
CABINET PERCENT INCREASE FROM STEP-TO-STEP									
RANK	STEP A	STEP B	STEP C	STEP D	STEP E	STEP F	MEAN	MEDIAN	MODE
C1	3.7	3.7	3.7	3.7	3.7	3.7	3.7	3.7	3.7
C2	3.7	3.7	3.7	3.7	3.7	3.7	3.7	3.7	3.7
C3	3.7	3.7	3.7	3.7	3.7	3.7	3.7	3.7	3.7
C4	3.7	3.7	3.7	3.7	3.7	3.7	3.7	3.7	3.7
CSM	3.7	3.7	3.7	3.7	3.7	3.7	3.7	3.7	3.7
C5C	3.7	3.7	3.7	3.7	3.7	3.7	3.7	3.7	3.7



RANGE	STEP A	STEP B	STEP C	STEP D	STEP E	STEP F
24	61,524	64,620	67,848	71,196	74,784	78,168
26	65,388	68,628	72,072	75,612	79,440	83,052
29	71,364	74,844	78,624	82,572	86,712	90,648
32	78,048	81,912	86,016	90,312	94,848	99,144
45	114,660	120,372	126,312	132,624	139,392	145,704
V1	153,704	159,852	166,246	172,895	179,812	187,004

- RANGE**
- 24 Agricultural Operations Manager--MJC
Human Resources Coordinator
 - 26 Food Services Manager
Senior Accountant
 - 29 Director of Admissions, Records & Assessment--CC
 - 32 Bookstore Manager
Auxiliary Services Manager
Campus Facilities Manager--Central Services
Director of TRIO Pre-College Programs
Director of Workforce Training and Development
Human Resources Operation Manager
 - 45 Dean of Ag, Environmental Sciences--MJC
Dean of Allied Health, Family & Consumer Sciences--MJC
Dean of Arts, Humanities, & Communications--MJC
Dean of Business, Behavioral & Social Sciences--MJC
Dean of Career Technical Education & Economic Development--CC
Dean of Counseling & Student Learning--MJC
Dean of Equity and Student Learning
Dean of Instructional Services, Arts & Sciences--CC
Dean of Literature & Language Arts / Library & Information Technology
Dean of Physical Recreation & Health Ed--MJC
Dean of Sciences, Math & Engineering--MJC
Dean of Career/Tech Ed, Community Ed / Workforce Development
Dean of Special Programs, Enrollment Services & Student Learning
 - V1 Controller (Central Services)
Vice President of Instruction--CC & MJC
Vice President of Student Services--CC & MJC

LTAC PERCENT INCREASE FROM STEP-TO-STEP									
RANGE	STEP A	STEP B	STEP C	STEP D	STEP E	STEP F	MEAN	MEDIAN	MODE
24	4.8	4.8	4.7	4.8	4.3	4.7	4.7	4.8	4.8
26	4.7	4.8	4.7	4.8	4.3	4.7	4.7	4.7	4.8
29	4.6	4.8	4.8	4.8	4.3	4.7	4.8	4.7, 4.8	4.8
32	4.7	4.8	4.8	4.8	4.3	4.7	4.7	4.8	4.7
45	4.7	4.7	4.8	4.9	4.3	4.7	4.7	4.7	4.7
V1	3.8	3.8	3.8	3.8	3.8	3.8	3.8	3.8	3.8



YFA PERCENT INCREASE FROM STEP-TO-STEP					
STEP	COLUMN I	COLUMN II	COLUMN III	COLUMN IV	COLUMN V
MEAN	3.3	3.3	3.3	3.3	3.2
MEDIAN	3.4	3.4	3.4	3.4	3.3
MODE	None	None	0.8	0.8	0.8



Stay informed. Stay engaged. Stay united.